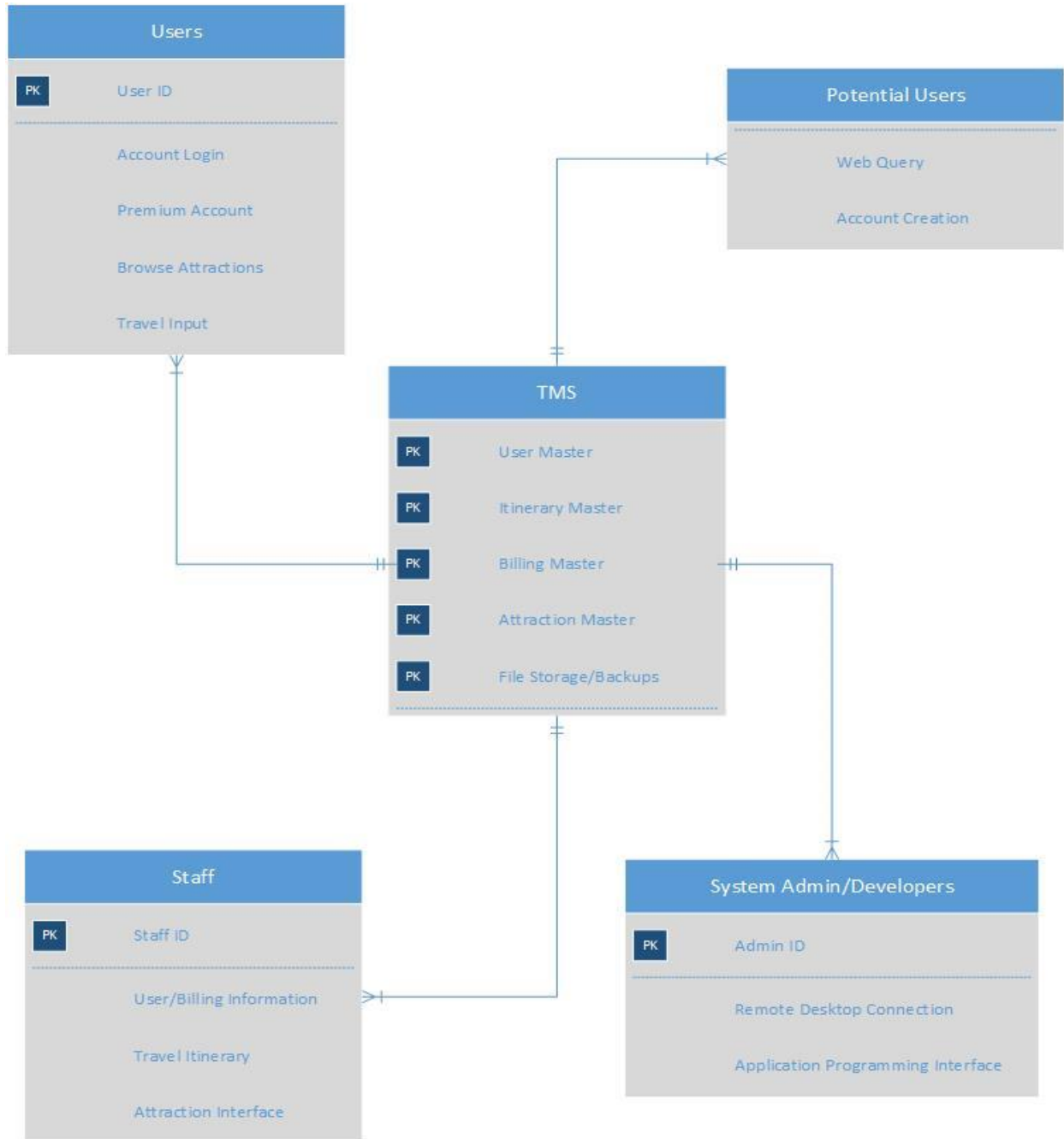


Unit 3: Project – Entity Relationship Diagram

Conceptual Entity Relationship Diagram:



Use Case Scenario:

Use case name:	Input travel itinerary
-----------------------	------------------------

Description:	User or staff inputs the travel itinerary into the Travel Management System (TMS) for processing	
Actor(s):	Users or Staff	
Preconditions:	User must have created an account within the TMS first	
Postconditions:	User or Staff can modify, view local currency exchange rates, or attractions	
Steps Performed:	1	User or Staff logs into the TMS interface via web or mobile application
	2	User or Staff selects input travel itinerary and inputs all applicable information for desired travel area
	3	User or Staff select and additional areas to add
	4	User or Staff select nearby attractions to add to itinerary
	5	User or Staff select any foreign exchange rates they want conversions to itinerary
	6	User or Staff submits request and the system saves itinerary in profile
Variations:	System administrators or web developers can input and TMS functions with more parameters	
Frequency of Use:	Always	
Additional Information:	Users can choose to print itinerary for offline use should they choose or save to mobile application for offline use	
Open Issues:	None	

Use Case Diagram:

